



TECHNICAL SPECIFICATIONS

CODE PROGRAM BY OVICUO

Date 30.04.2026

COLOR PANELS	SMOOTH:	02-MLSB	WHITE MATTE TEXT
		02-MLS01	STUDENT. TEXT. MATH
		02-MLSN	BLACK MATTE TEXT
		02-MLSG3	GRAY MATTE TEXT
	WOOD:	02-MMAA	MAPLE
	02-MMAH	IS	
	TENDENCIES:	02-MMAC* CREAM ACACIA*	
		02-MMCS* WILD CHERRY*	
ALUMINUM COLOR		08-ANPM	ANODIZED.MATTE SILVER
		08-LA9010T	WHITE MATTE TEXT
		08-LA7022T*	ANTHR. GRAY TEXT. MATE*
		08-LA9011M*	SMOOTH MATTE BLACK*
		08-ANIN*	INOX CHAMPAGNE*
DOOR FRAME	STRAIGHT - 427		
INTERSECTION	30mm structural profile		
	Hidden structural profile (blind modules only) <i>AS OF SEP-2017</i>		
RUBBER COLOR	Aluminum Color	Rubber Color	
	GLAZING PROFILES	04-TR	TRANSPARENT
	DOOR FRAME PROFILE	aluminum color	
	SILVER ALUMINUM M. / WHITE:	4 PM	SILVER
	ANTIQUE GREY ALUMINUM / BLACK / STAINLESS STEEL: 04-9011		BLACK
LOWER BASE	420 - ZÓCALO		
UPPER CORONATION	420 - CORONATION		
START-UPS	420 - WALL - SCREEN		
	421/422 - WALL - PARTITIONS		
90° CORNER	OPEN CORNER - 428		
3 EXITS	BLIND SINK (min 150mm)		
PROFILES 1 GLASS	FRAMED		
	A TESTA		
PROFILES 2 GLASS	FRAMED		
	A TESTA		
BLIND DOOR HARDWARE	HINGES: Aluminum Color	Rubber Color	
	MATTE SILVER	FLAT SILVER HINGE	
	WHITE MATTE TEXT	WHITE FLAT HINGE	
	ANTR. GREY/BLACK M.	BLACK FLAT HINGE	
	INOX CHAMPAGNE	FLAT HINGE STAINLESS STEEL	
	KNOB / LEVER: 07-POMEPM	POMO MERONI PLATA	
	07-POMEN	MERONI SILVER BLACK KNOB	
	07-MNTU-U-PM	SILVER "U" TUBULAR LEVER	
	07-MNTU-R*	TUBULAR HANDLE "R" STAINLESS STEEL*	
	GLASS DOOR HARDWARE	07-BISTD05PM	SQUARE SILVER HINGES
	07-BISTD05INOX*	SQUARE STAINLESS STEEL HINGES*	
	07-POMEPM05	POMO MERONI PLATA	
	07-POMEN05	BLACK MERONI KNOB	
	07-MNTU-U05PM	SILVER "U" TUBULAR LEVER	
	07-MNTU-U05INOX*	TUBULAR "L" STAINLESS STEEL HANDLE*	

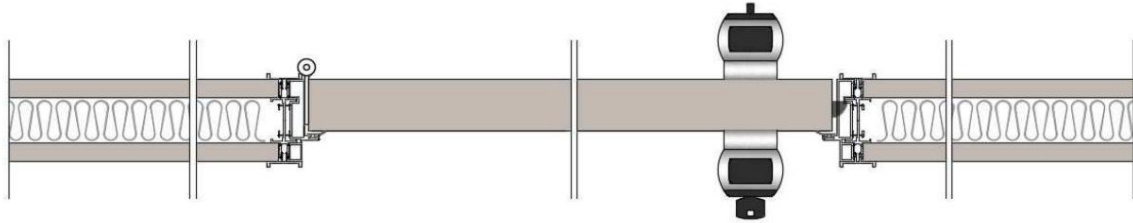
FRAMED DOOR HARDWARE A CRYSTAL	HINGES	SAME AS BLIND DOORS
	07-ADPENV	ADAPTER:
	Aluminum Color	Color Adapter
	MATTE SILVER	MATTE SILVER LACQUER
	WHITE MATTE TEXT	WHITE TEXT.
	ANTR. GREY/BLACK M.	MATTE BLACK
	INOX CHAMPAGNE	Champagne Stainless Steel Lacquer
07-MNTU-U-PM	SILVER "U" TUBULAR LEVER	
07-MNTU-R*	TUBULAR HANDLE "R" STAINLESS STEEL*	
FRAMED DOOR HARDWARE DOUBLE GLAZING	HINGES	SAME AS BLIND DOORS
	07-MNTU-U-IN	STAINLESS STEEL "U" TUBULAR HANDLE
SLIDING DOOR HARDWARE	07-GUCOPM	MATTE SILVER SLIDING GUIDE
	07-TISTD-U	STAINLESS STEEL "U" TUBULAR HANDLE
	07-TICCE*	STAINLESS STEEL LOCKABLE HANDLE*

(*) OPTIONAL (Please inquire about price and/or delivery time)

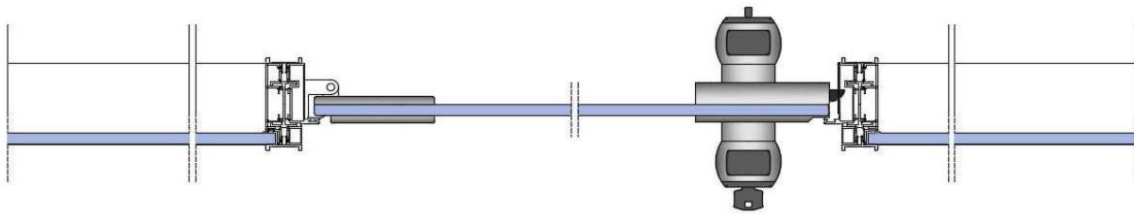
TECHNICAL DETAILS

Door frames

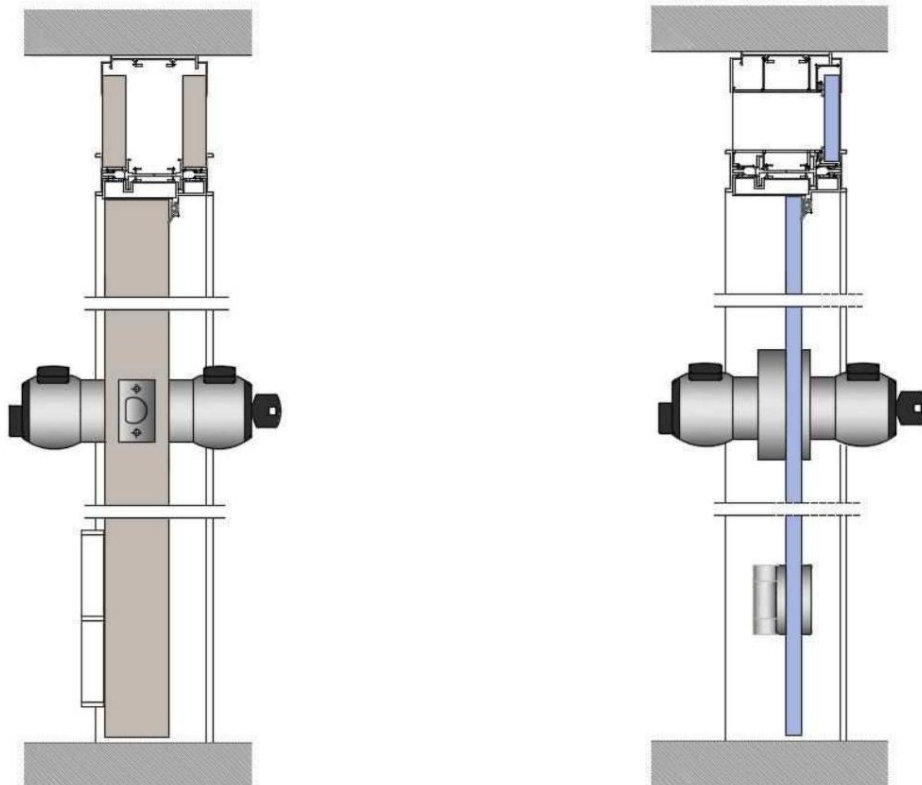
Horizontal section of a blind door



Horizontal section glass door

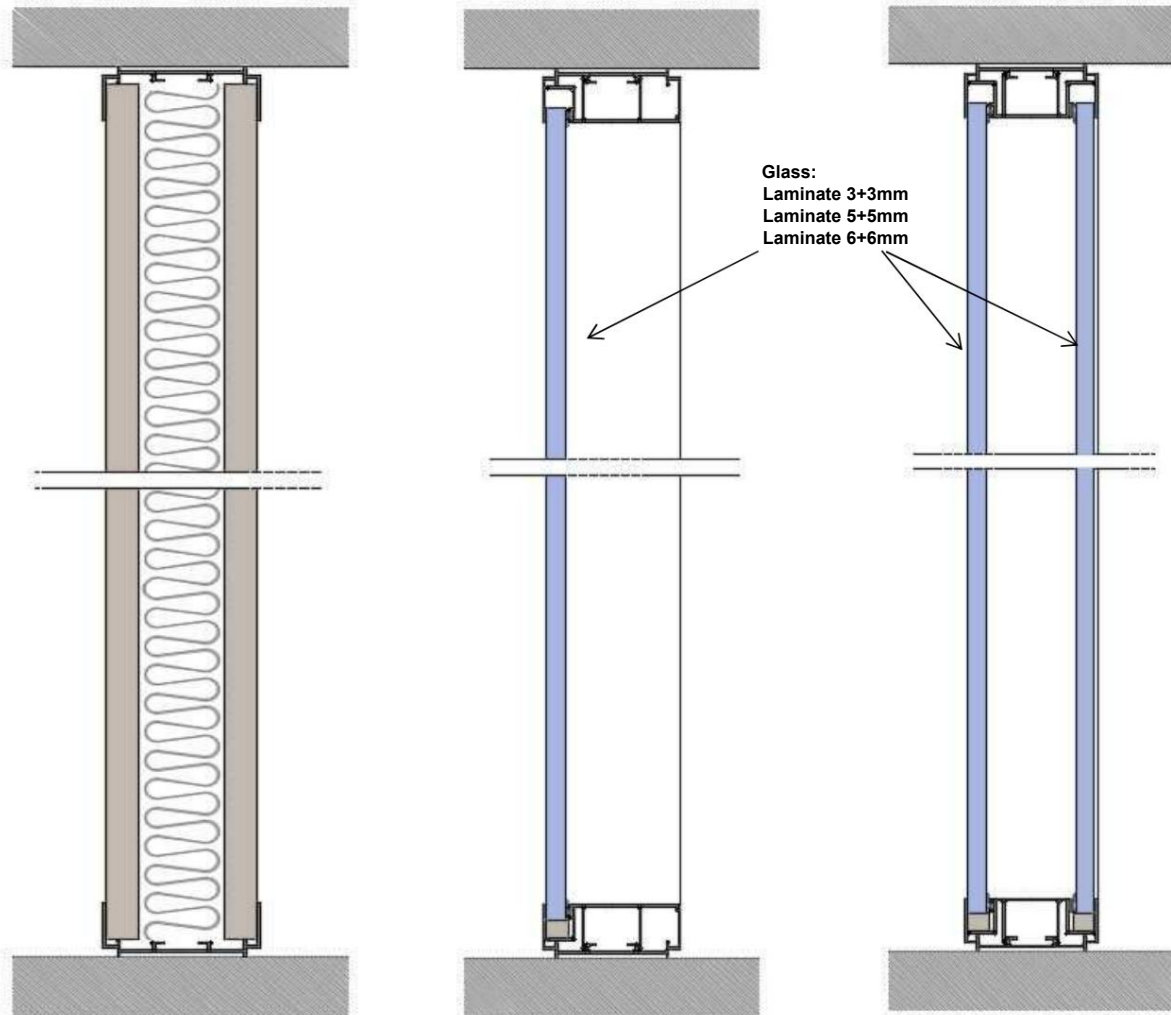


Vertical sections, solid door and glass



TECHNICAL DETAILS

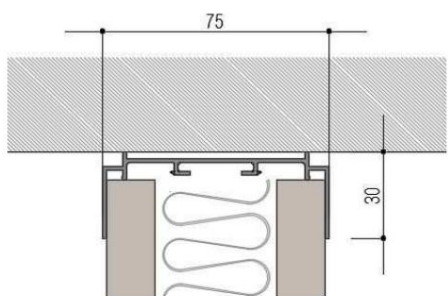
Vertical sections from floor to ceiling



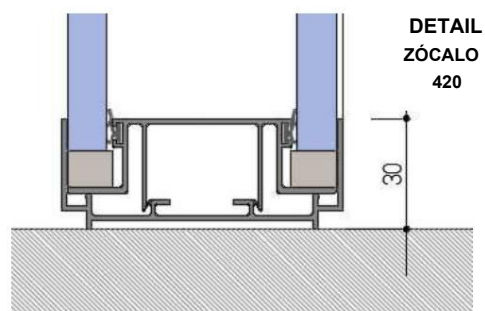
BLIND SECTION

**CRYSTAL SECTION
SIMPLE**

**CRYSTAL SECTION
DOUBLE**



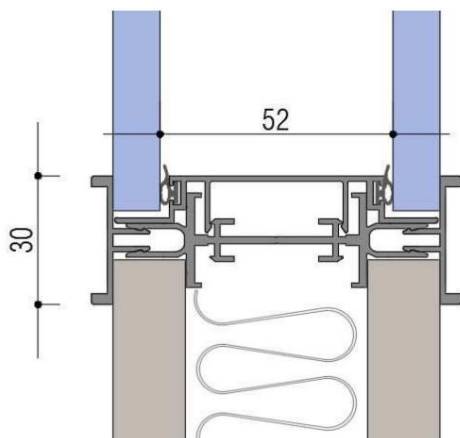
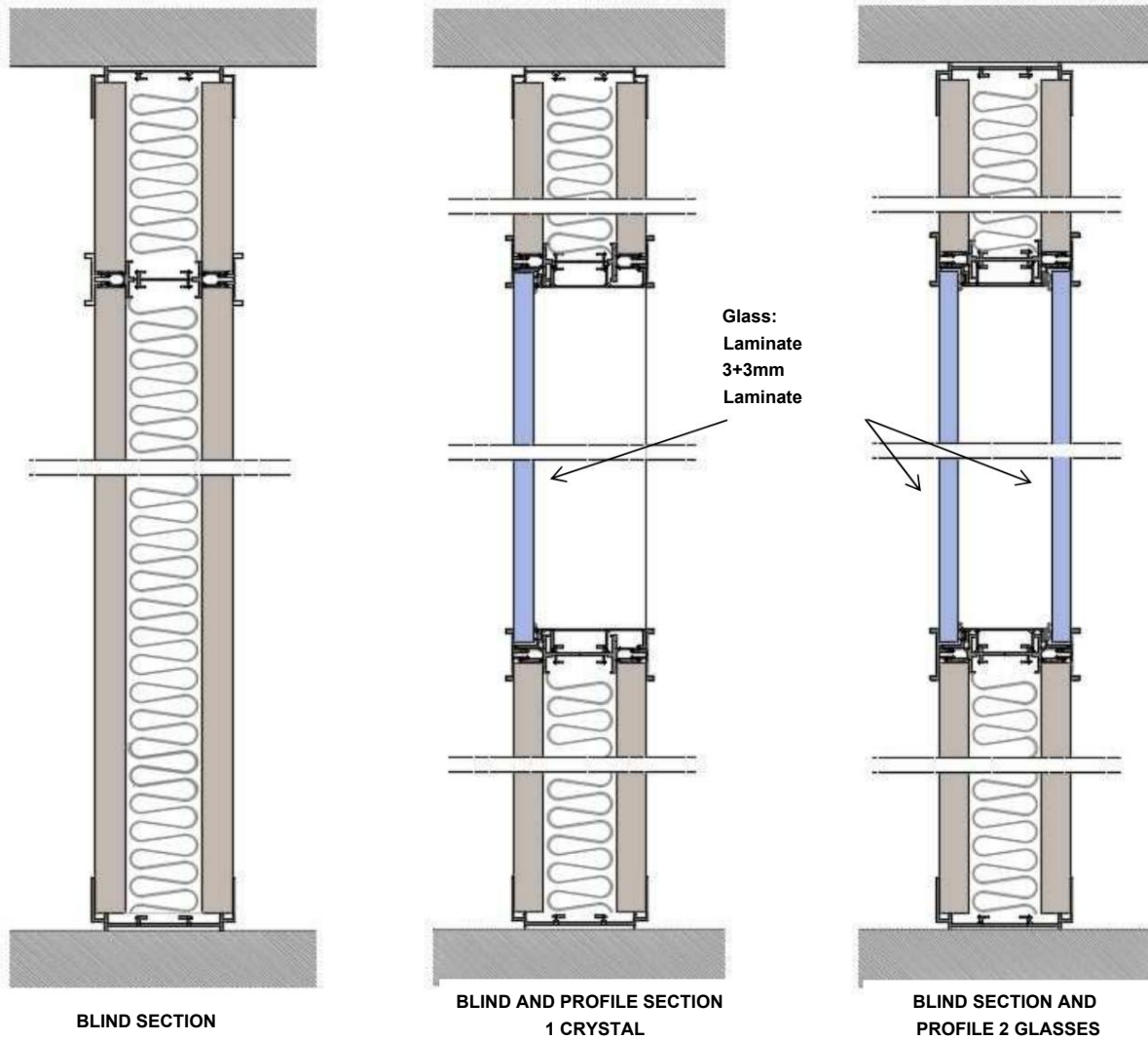
**DETAIL
CORONATION
420**



**DETAIL
ZÓCALO
420**

TECHNICAL DETAILS

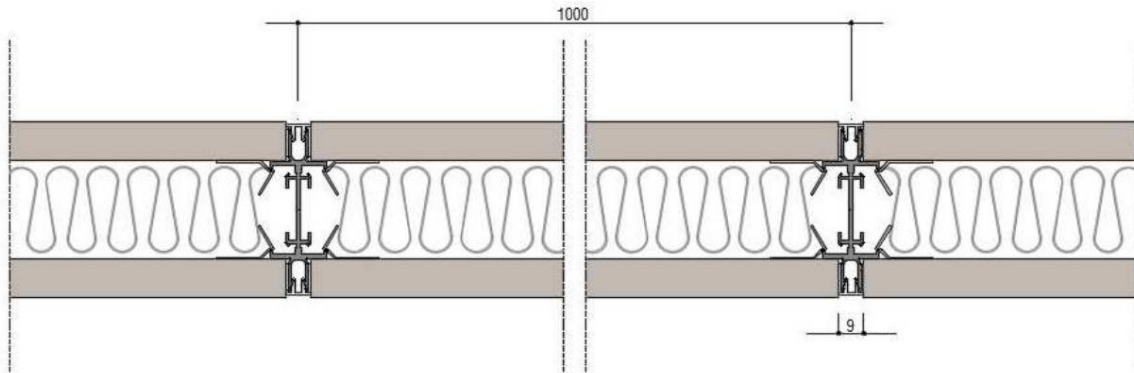
Vertical sections with crossbeams and structural profile



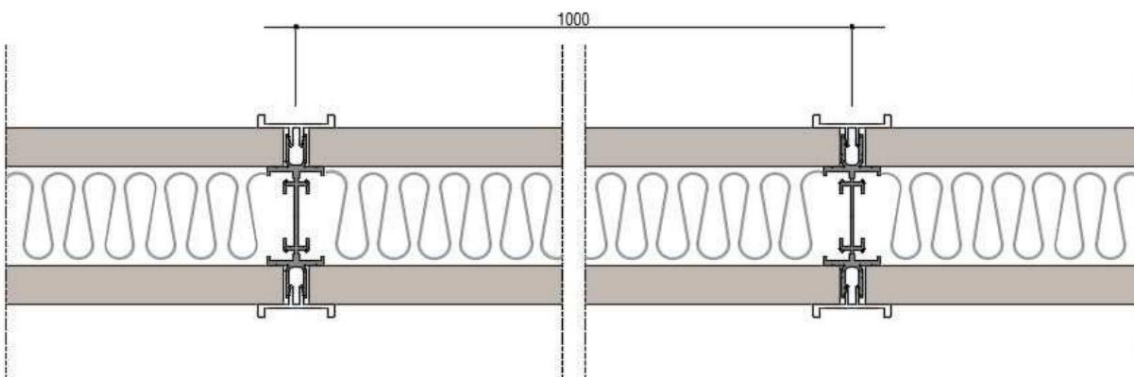
**DOUBLE GLAZING DETAIL
AND CROSSBAR WITH PROFILE
STRUCTURAL**

TECHNICAL DETAILS

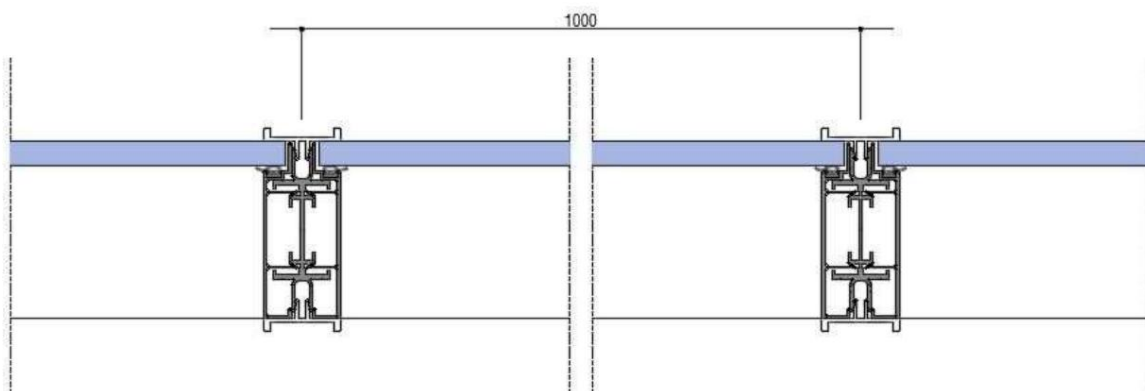
Horizontal sections



**BLIND HORIZONTAL SECTION
STRUCTURAL PROFILE FRAMING
HIDDEN**

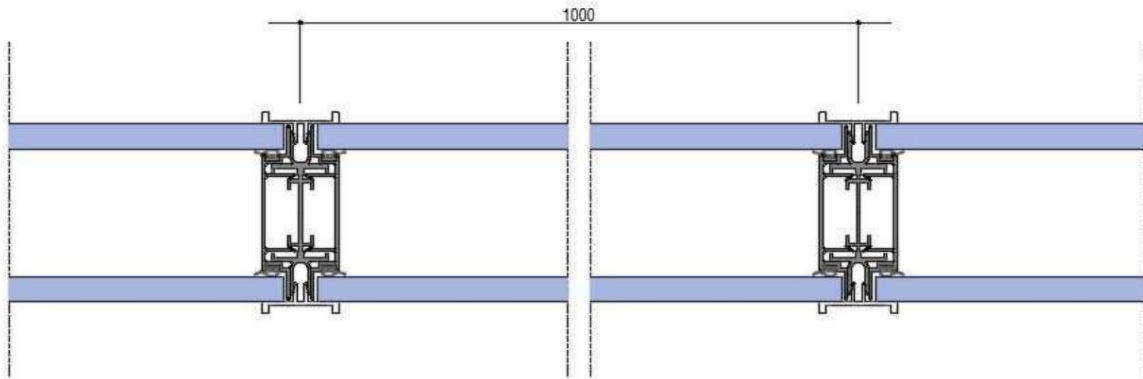


**BLIND HORIZONTAL SECTION
STRUCTURAL PROFILE FRAMING**

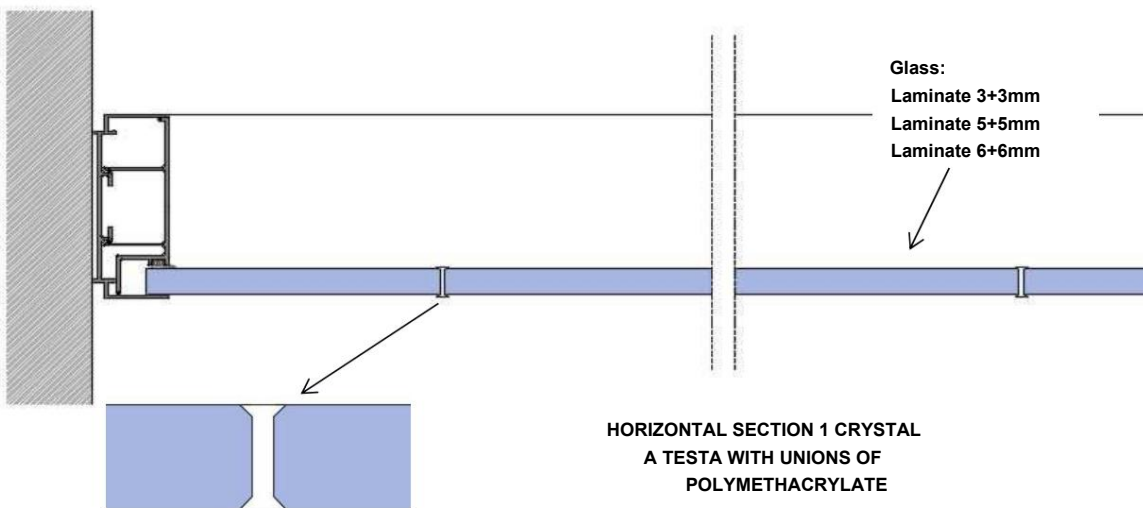


**HORIZONTAL SECTION 1 CRYSTAL
STRUCTURAL PROFILE FRAMING**

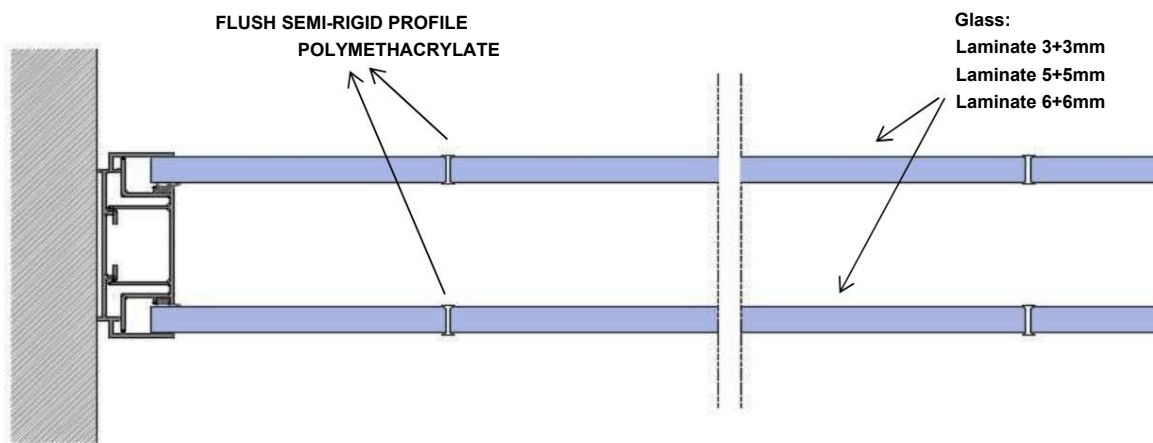
Horizontal sections



**HORIZONTAL SECTION 2 GLASS
FRAMED PROFILE
STRUCTURAL**



**HORIZONTAL SECTION 1 CRYSTAL
A TESTA WITH UNIONS OF
POLYMETHACRYLATE**

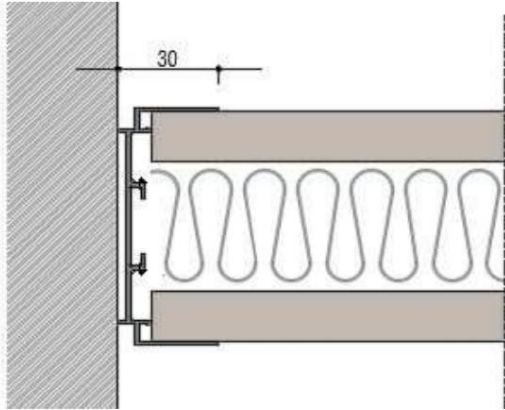


**HORIZONTAL SECTION 2 GLASS
A TESTA WITH UNIONS OF
POLYMETHACRYLATE**

TECHNICAL DETAILS

HORIZONTAL SECTIONS

Wall and/or partition starter post (According to project and plans)

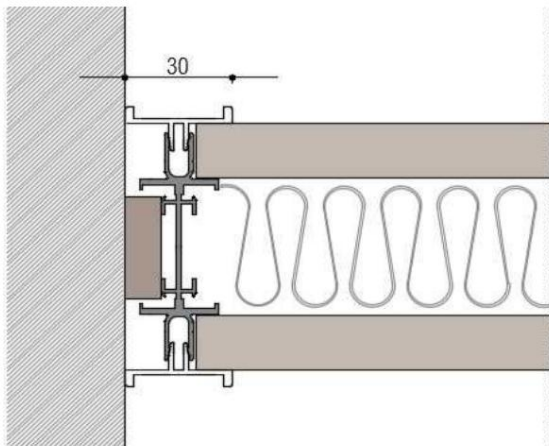


**STANDARD OUTPUT:
BLIND MODULES AND
DOUBLE OR MODULES
A SINGLE GLASS
(START 420)**

**STANDARD ANCHORING
SYSTEM: SCREWED.
SPECIAL: WITH ADHESIVE
SYSTEM**

HORIZONTAL SECTIONS

Wall and/or partition starter post (According to project and plans)



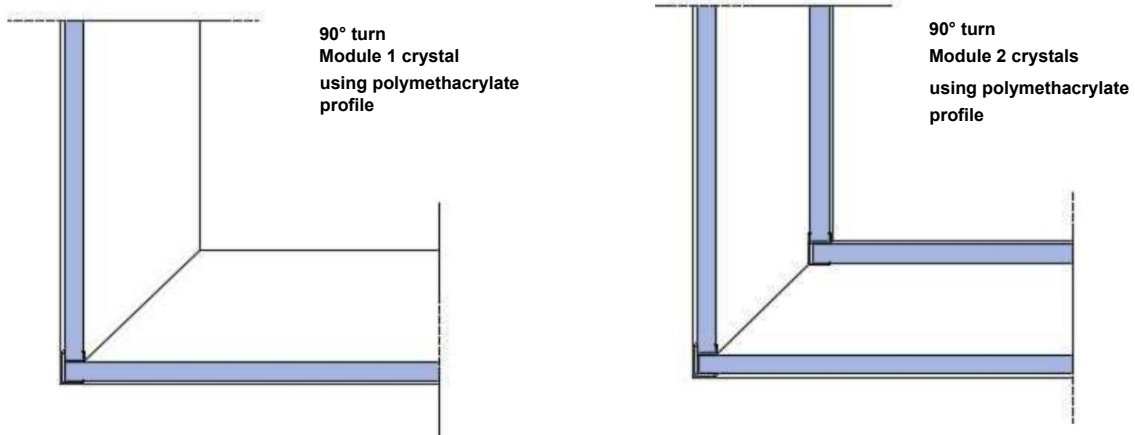
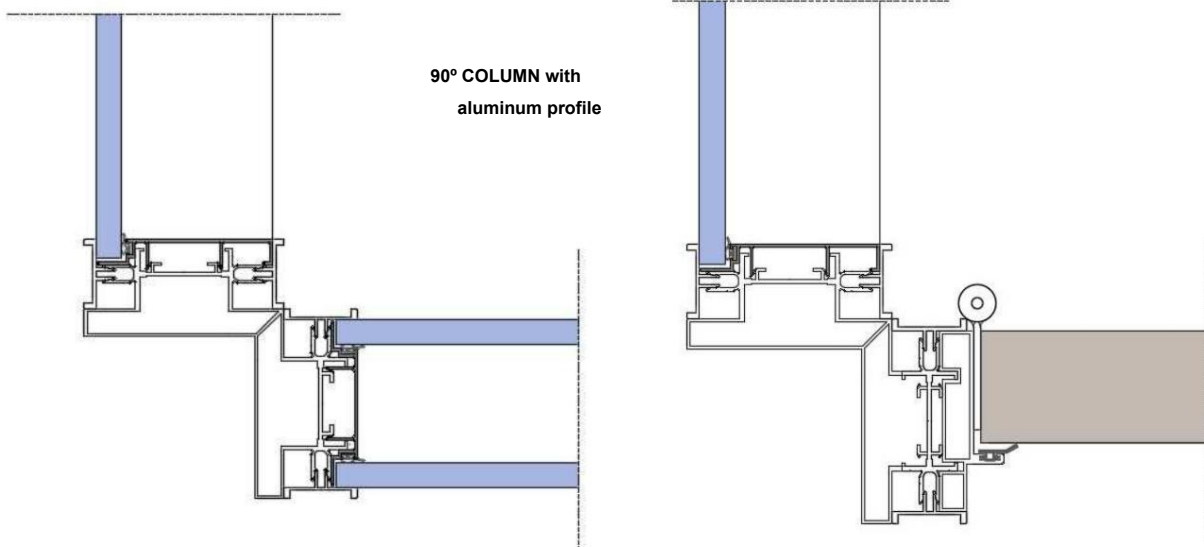
**BLIND MODULES AND
DOUBLE OR MODULES
A SINGLE GLASS
(START 421/422)**

**STANDARD OUTLET OF
SCREEN OR IN CASE
SINGLE MODULE
BETWEEN WALLS OR
WALL AND DOOR**

TECHNICAL DETAILS

SET SECTIONS

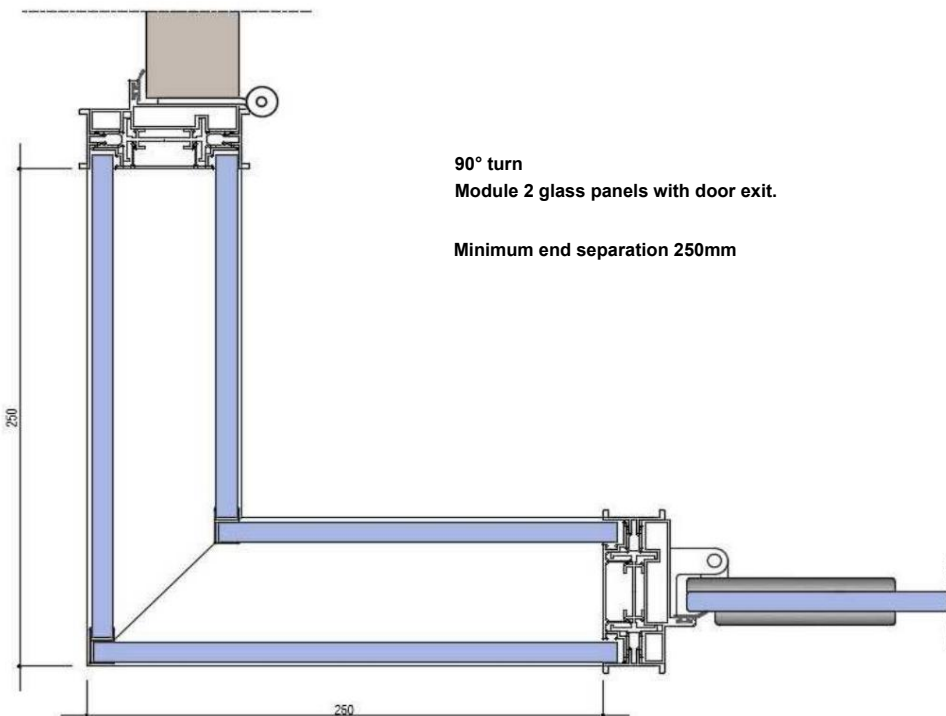
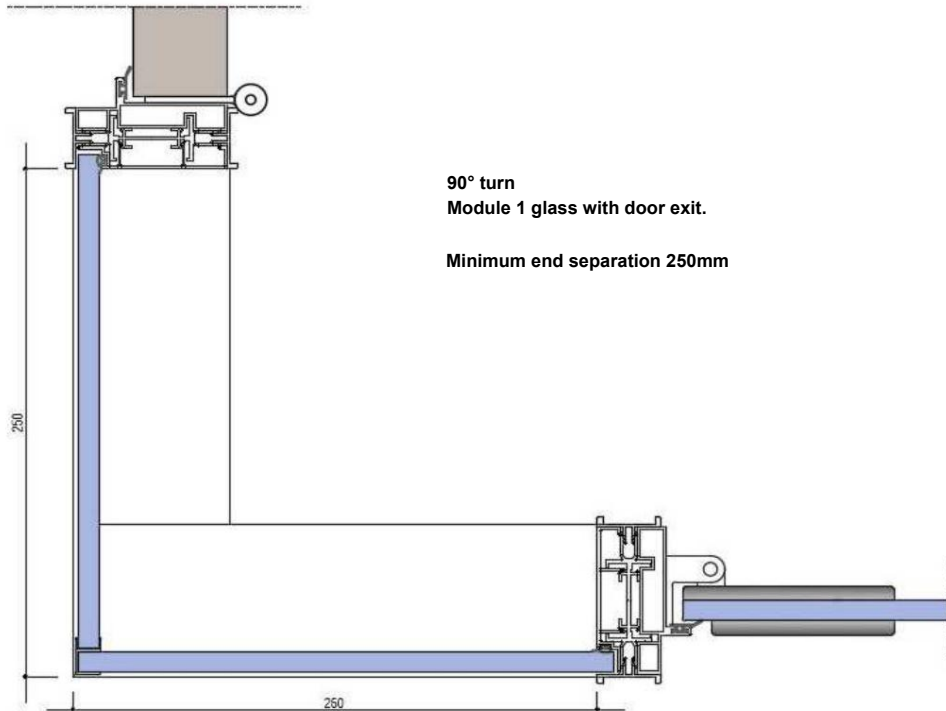
90° Joints



TECHNICAL DETAILS

SET SECTIONS

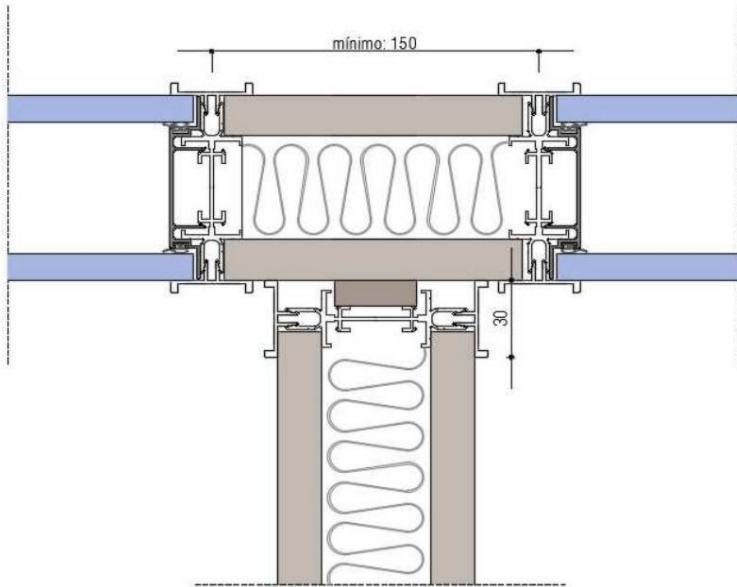
90° joints - with door outlet



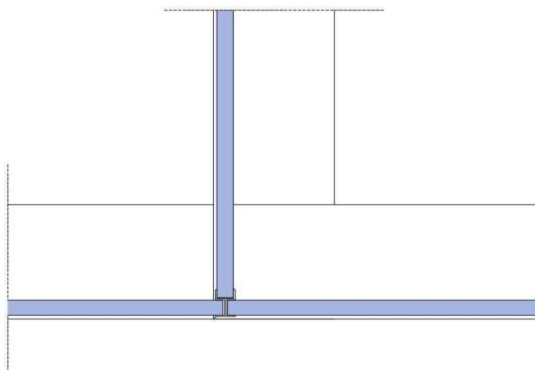
TECHNICAL DETAILS

SET SECTIONS

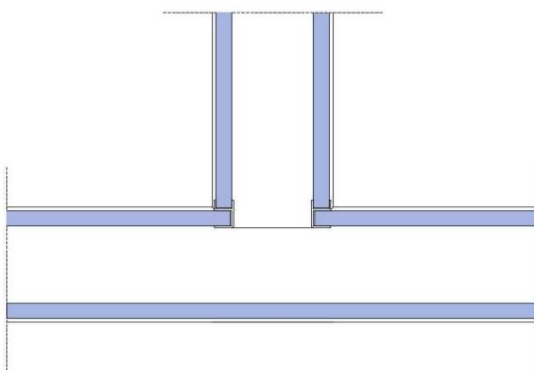
90° - 180° Joints



I find three ways using boards of the same color as the rest of the panels or a similar color to the aluminum profiles.



I find 3 ways.
Module 1 crystal using polymethacrylate profile.

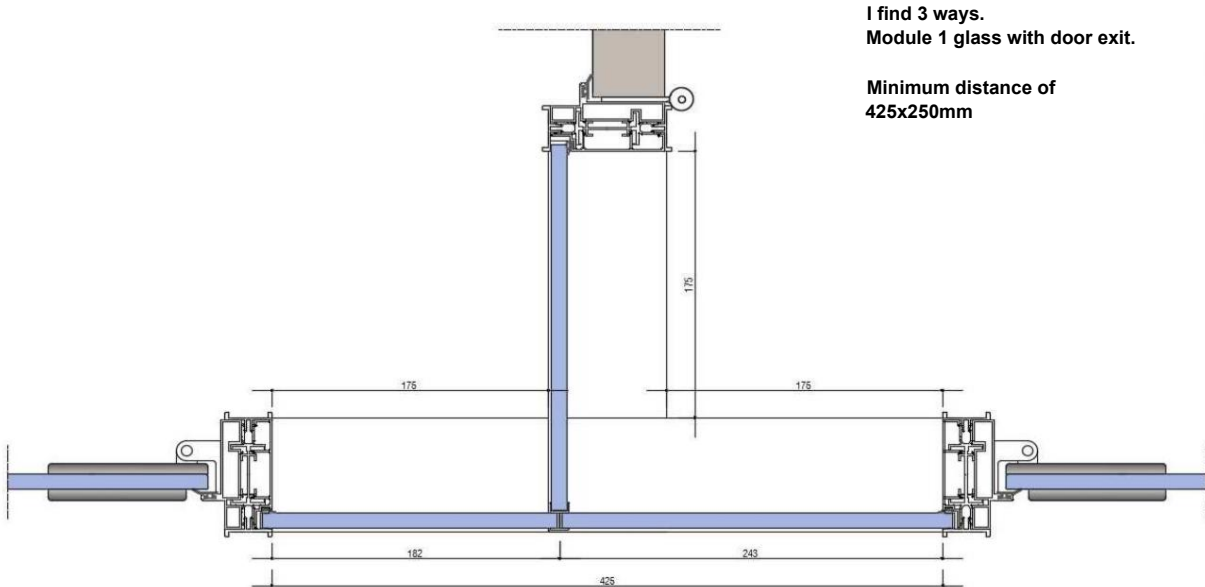


I find 3 ways.
Module 2 crystals using polymethacrylate profile.

TECHNICAL DETAILS

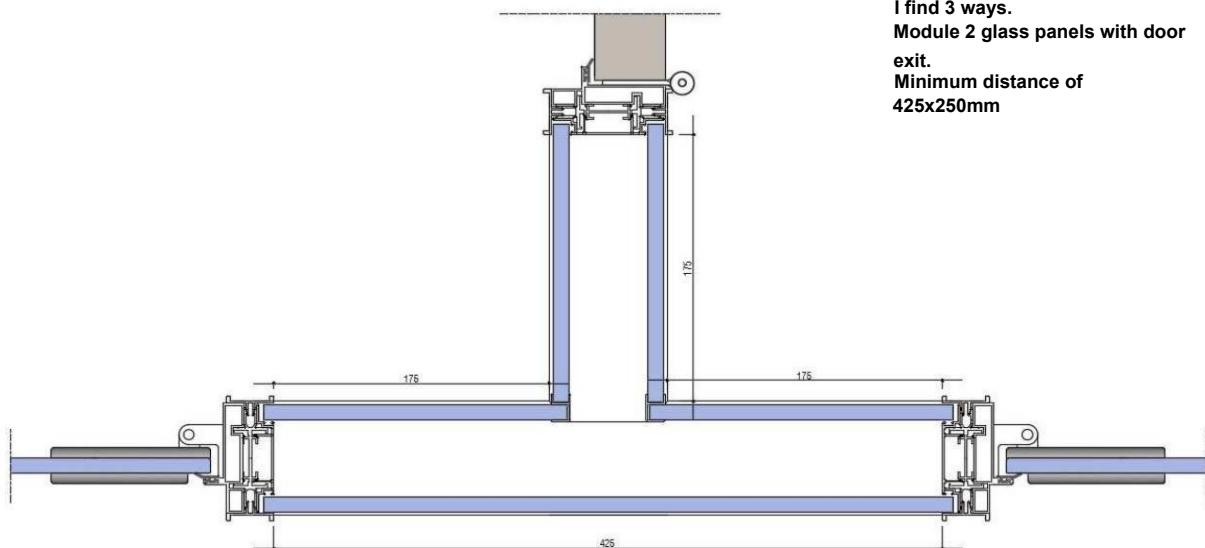
SET SECTIONS

90° - 180° Joints



I find 3 ways.
Module 1 glass with door exit.

Minimum distance of
425x250mm



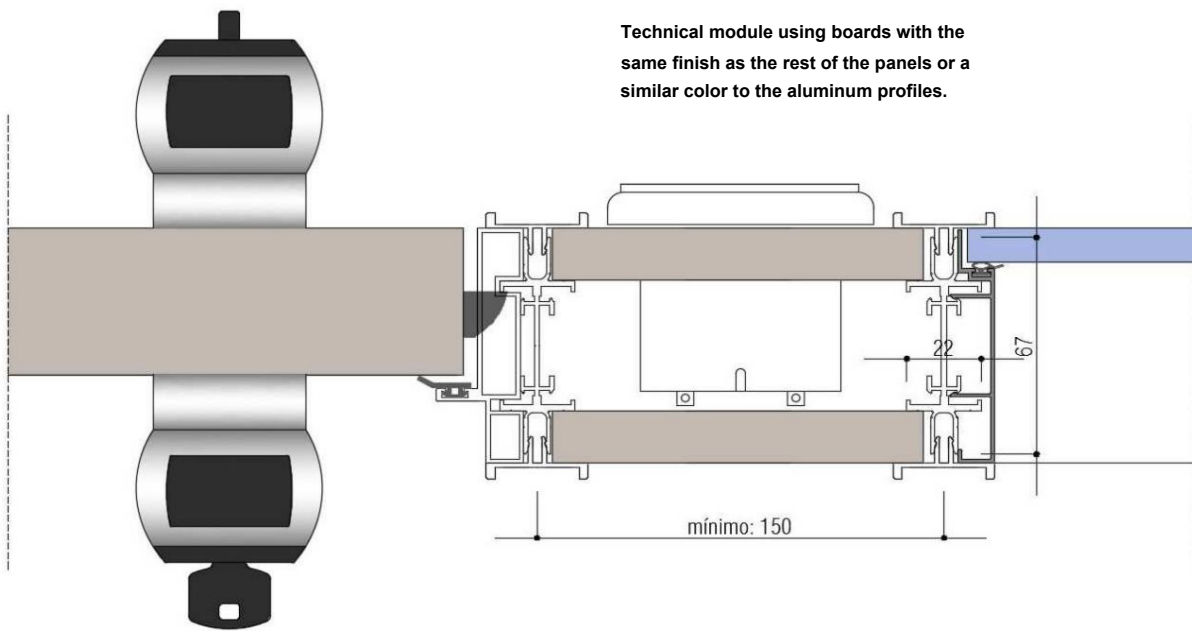
I find 3 ways.
Module 2 glass panels with door
exit.

Minimum distance of
425x250mm

TECHNICAL DETAILS

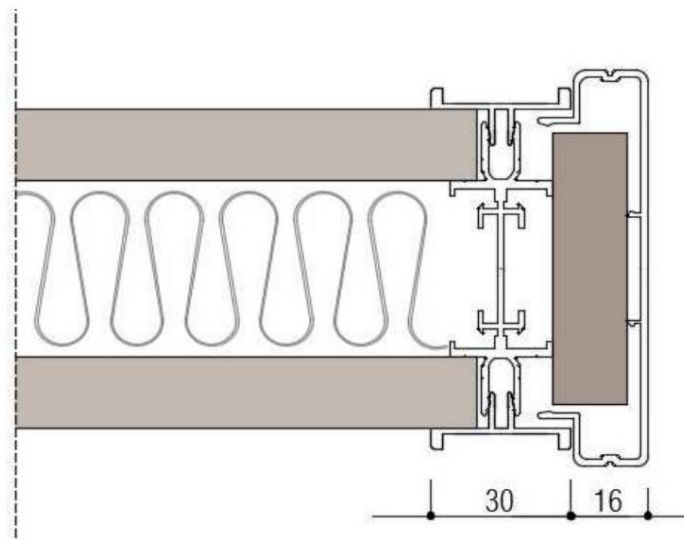
SET SECTIONS

Technical profile



SET SECTIONS

Final touch



Profiles for finishing touches, passageways and sliding door openings

BLIND DOOR PROGRAM

STANDARD

POMO MERONI
SILVER or BLACK



TUBULAR HANDLE
"U" SILVER



LOCK AND
CLOSING



OPTIONAL*

TUBULAR HANDLE
"L" INOX*



GLASS DOOR PROGRAM

STANDARD

POMO MERONI PLATA
or BLACK



TUBULAR "U" HANDLE
SILVER

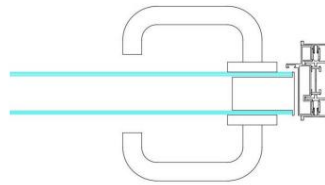


OPTIONAL*

TUBULAR "L" STAINLESS STEEL HANDLE*



DOUBLE GLAZED DOOR PROGRAM / ALUMINUM PROFILE PANEL ***

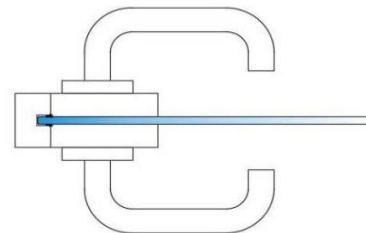
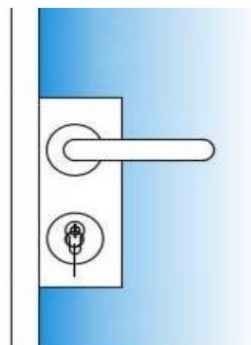


HARDWARE:

Flat hinges, aluminum color
Tubular handle "U" INOX finish



Framed glass door program ***



HARDWARE:

Flat hinges, aluminum color
Envatech adapter, aluminum color
SILVER tubular "U" lever
INOX* tubular handle "R"

SLIDING DOOR PROGRAM

STANDARD PULLER:
STAINLESS STEEL "U" TUBULAR HANDLE

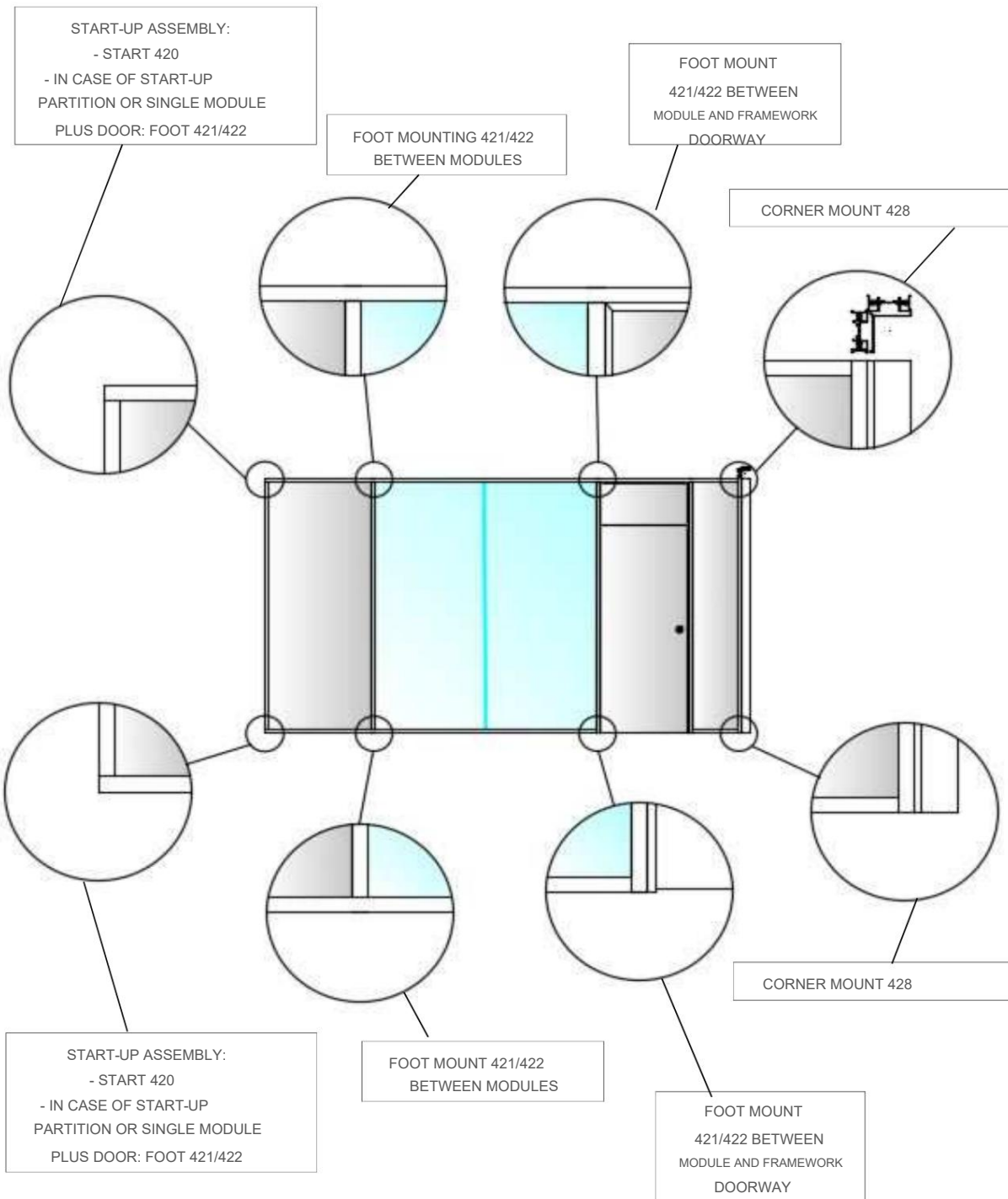


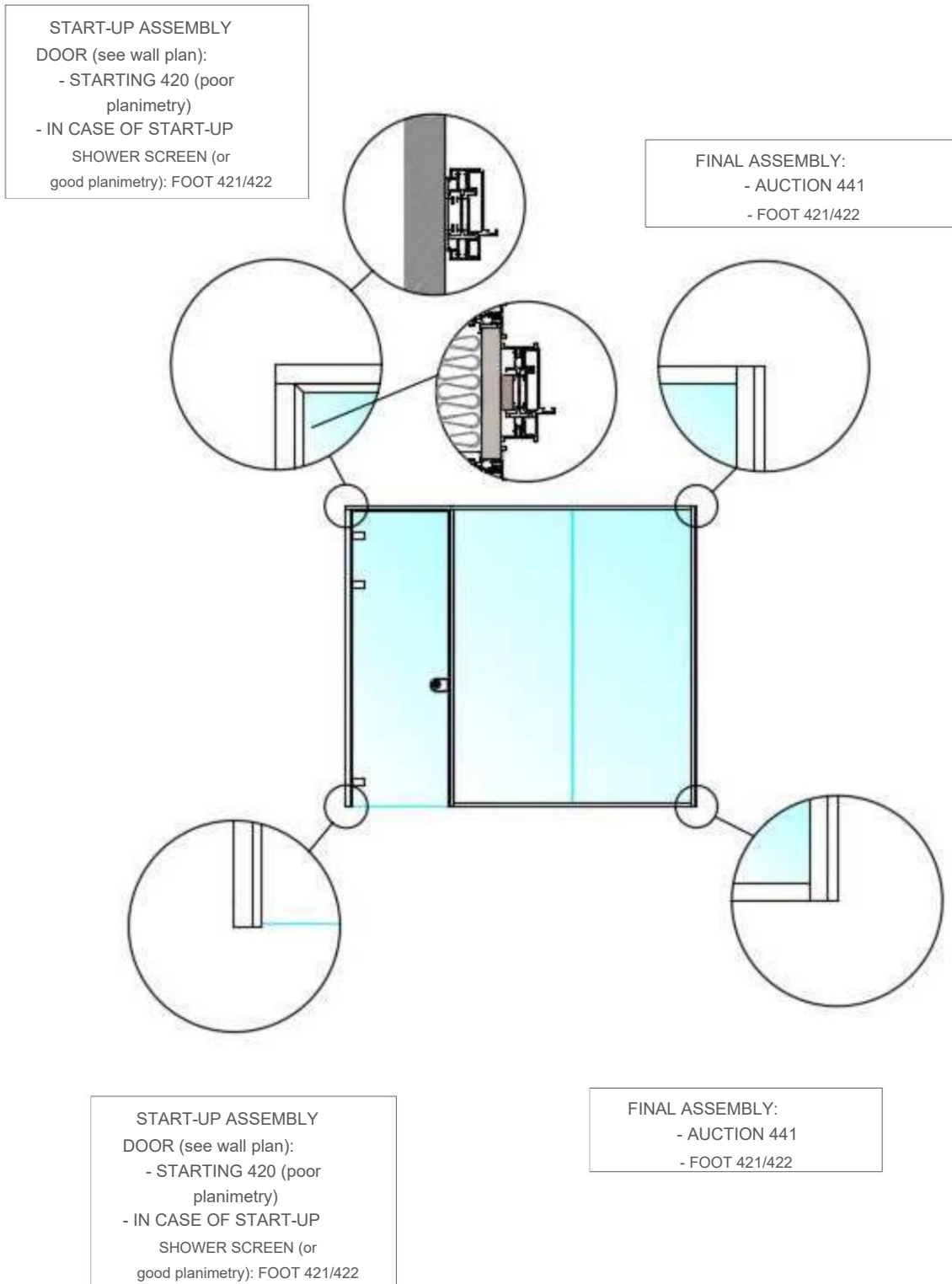
STAINLESS STEEL LOCK HANDLE (OPTIONAL)*

TUBULAR "R" STAINLESS STEEL HANDLE OPTIONAL*

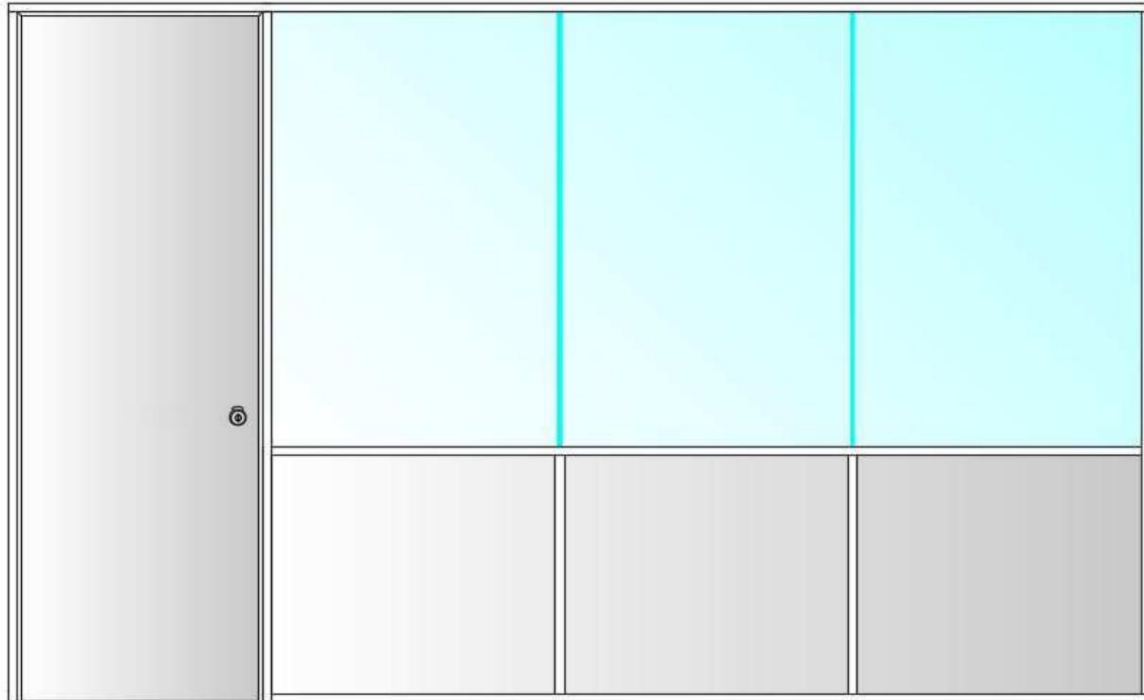


ASSEMBLY DETAILS

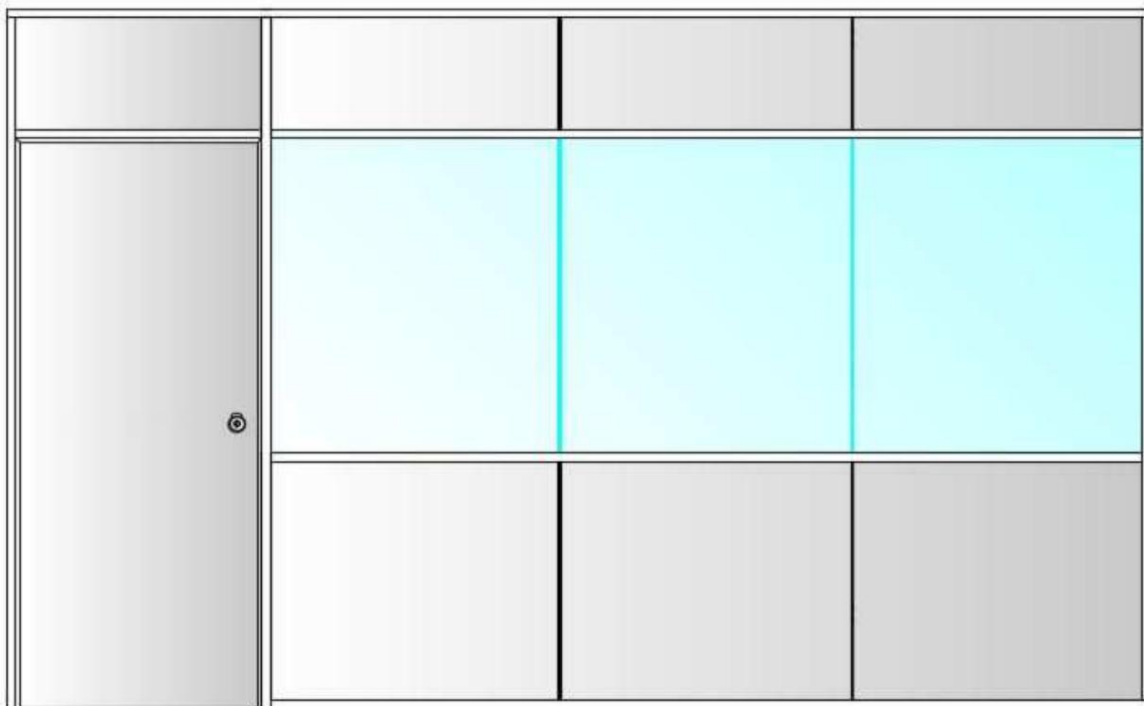




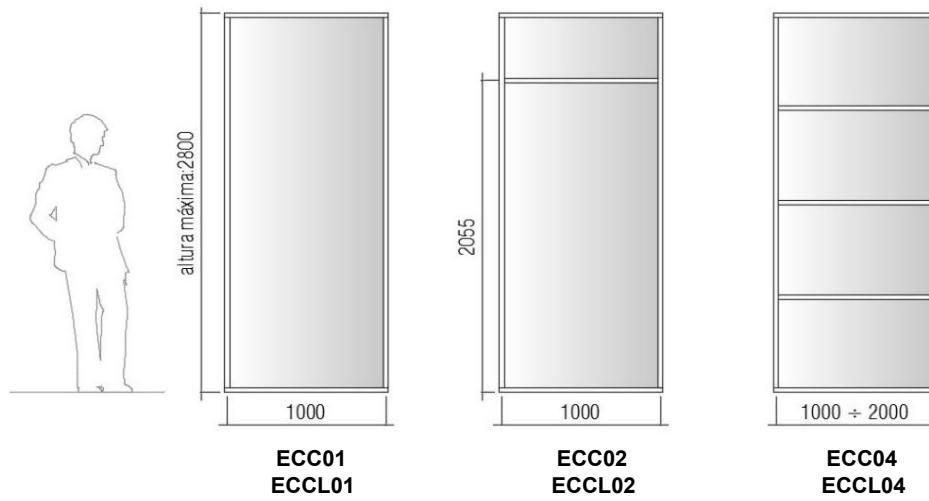
PROFILE ASSEMBLY DETAIL (PV)



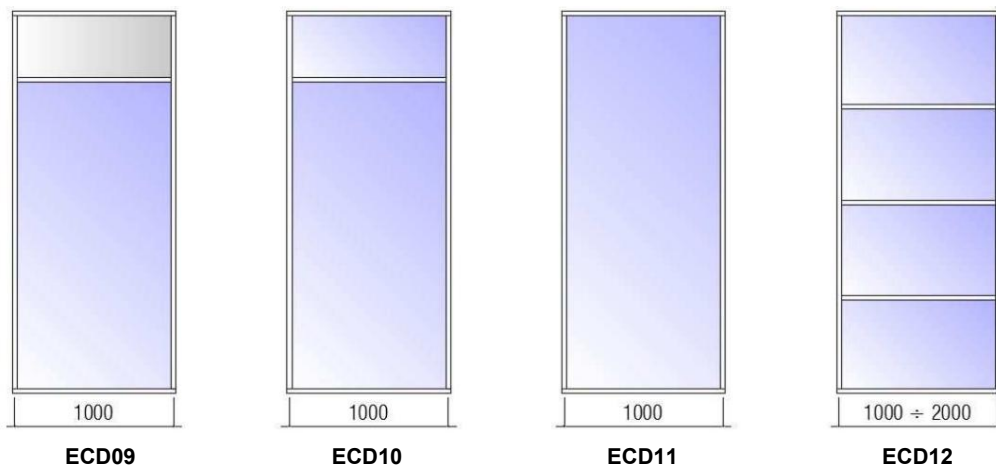
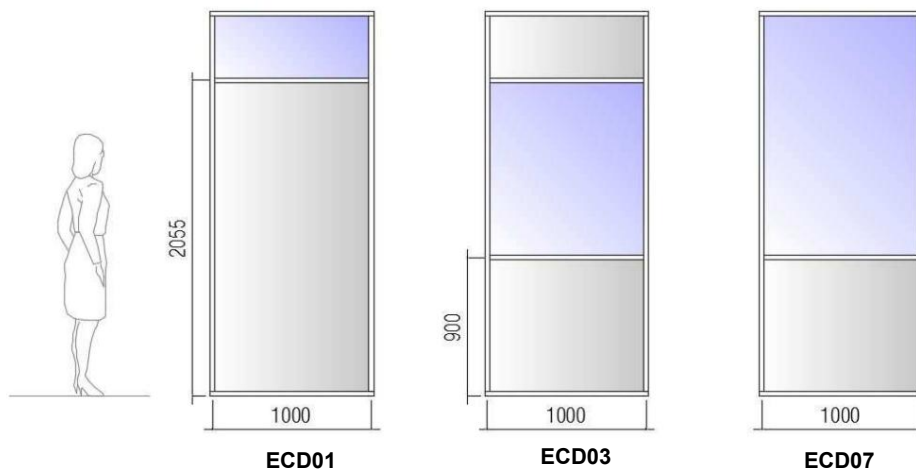
CONCEALED PROFILE ASSEMBLY DETAIL (PO)



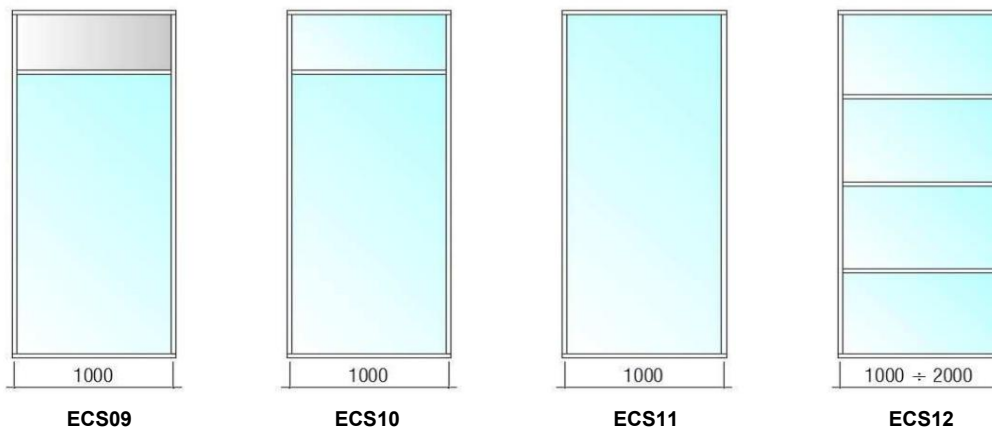
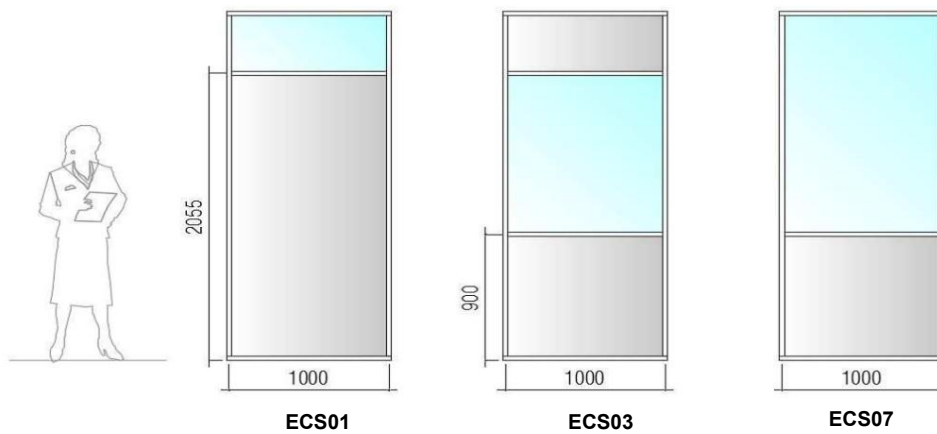
BLIND MODULES WITH HIDDEN U-SHAPED STRUCTURAL PROFILE



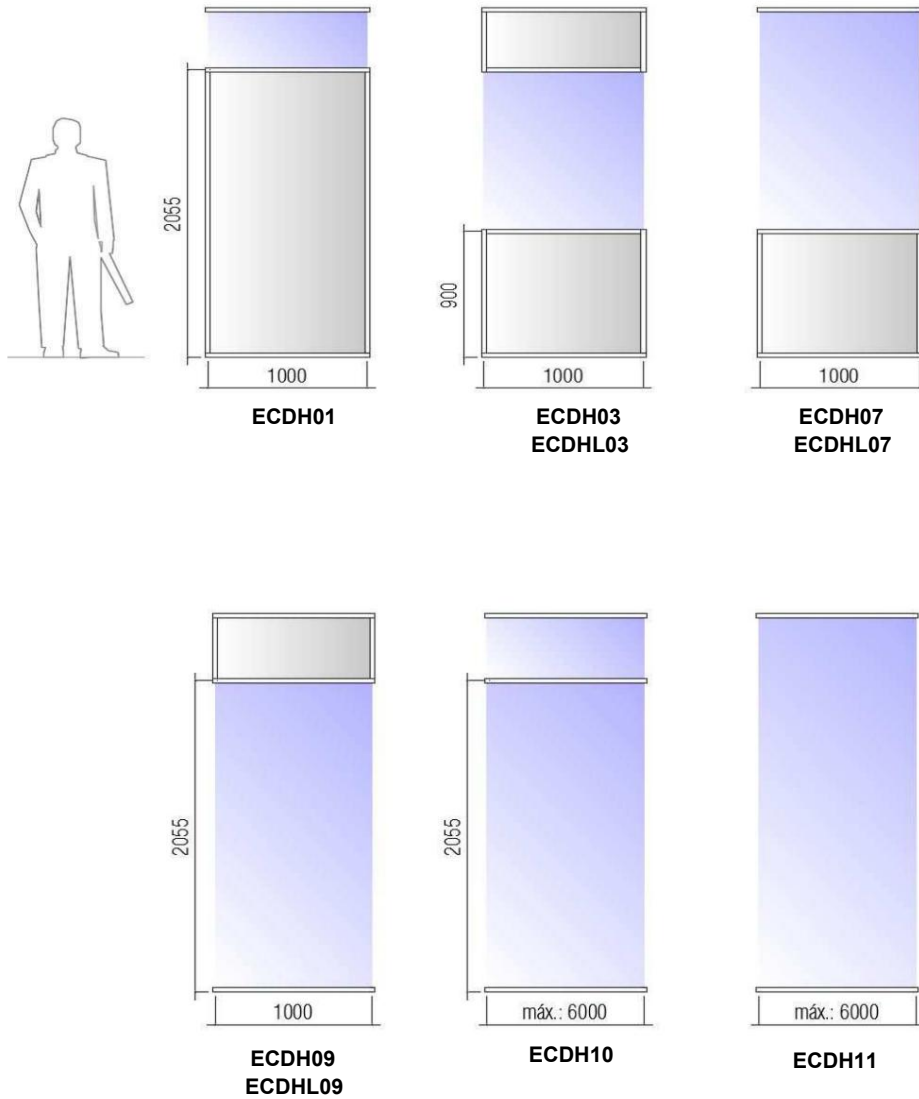
DOUBLE-GLAZED MODULES WITH Structural Profile



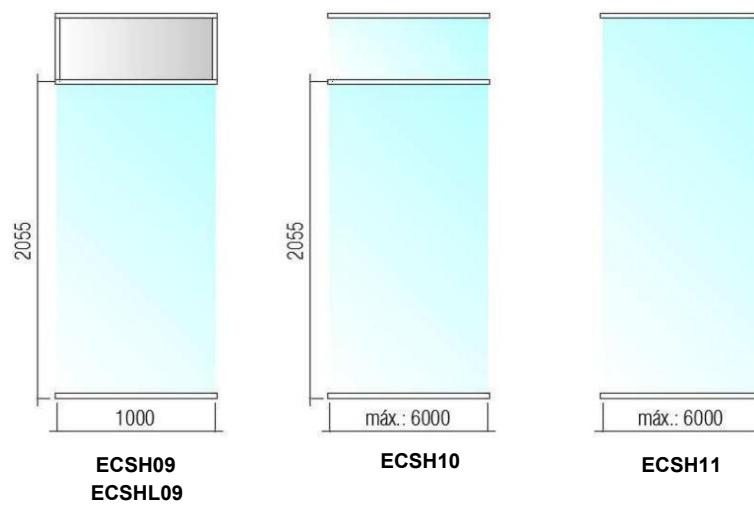
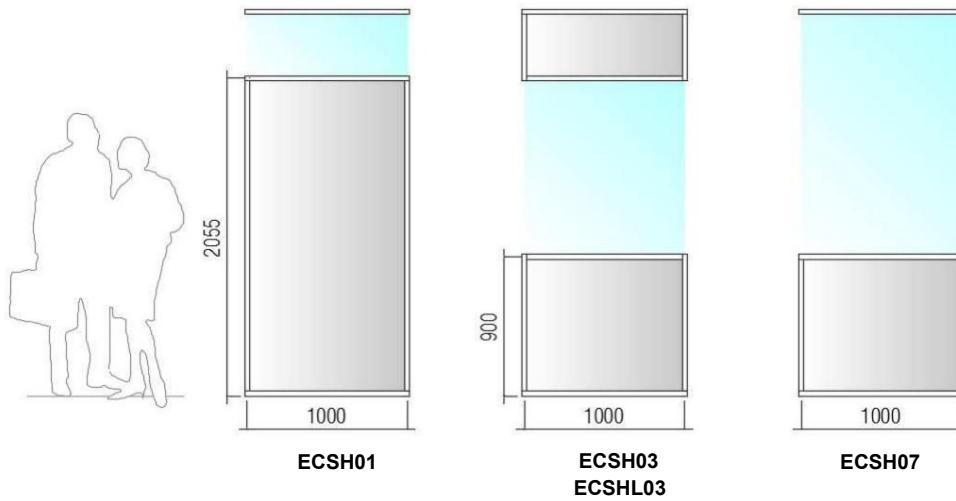
MODULES WITH A FRAMED GLASS



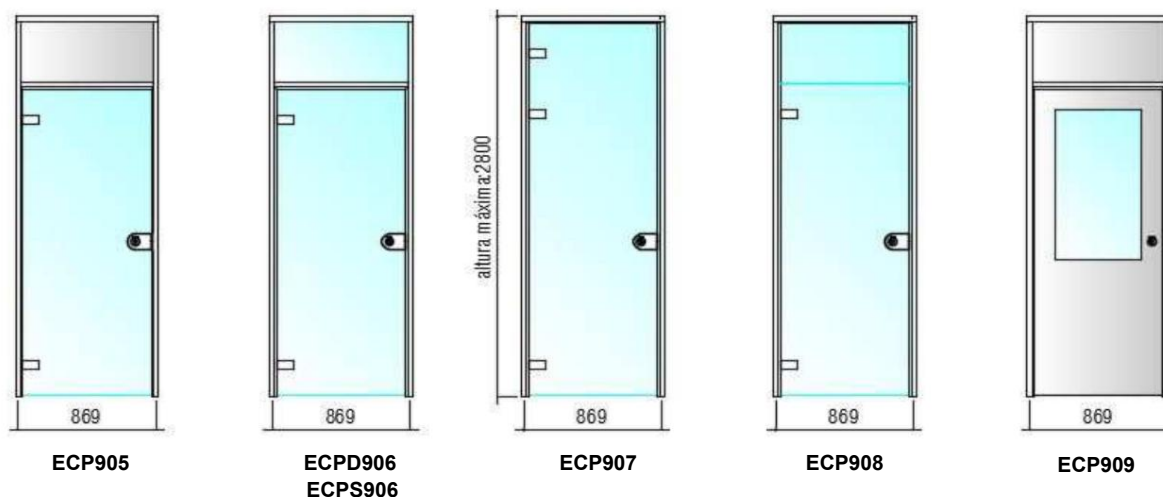
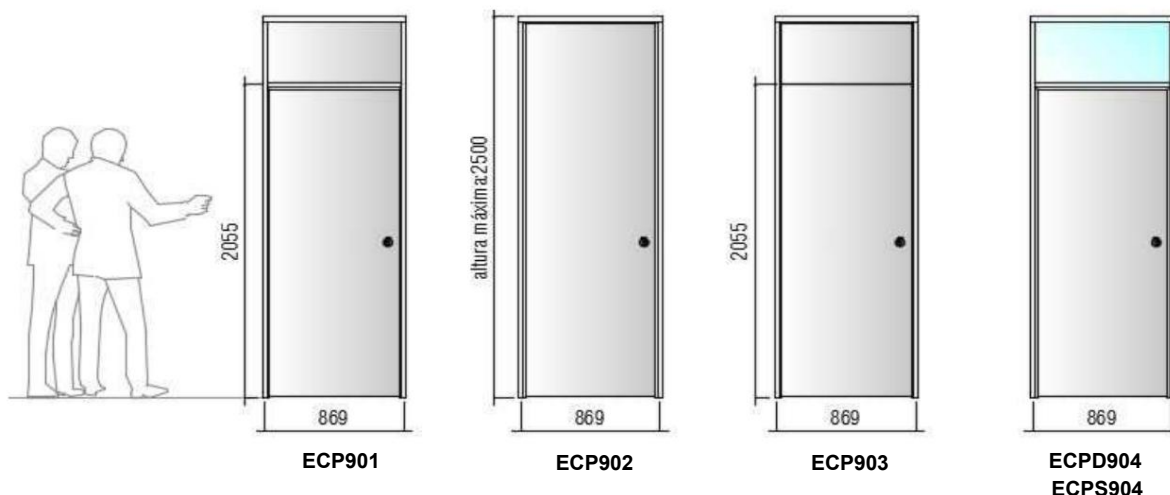
MODULES WITH DOUBLE GLAZING "THICK AND THICK" WITH CONCEALED STRUCTURAL PROFILE



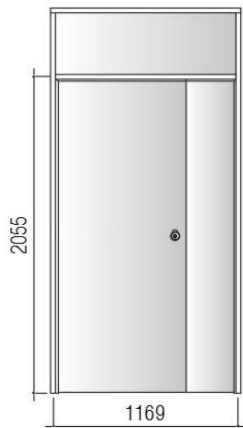
MODULES WITH A "THE END" GLASS WITH A STRUCTURAL OR HIDDEN PROFILE



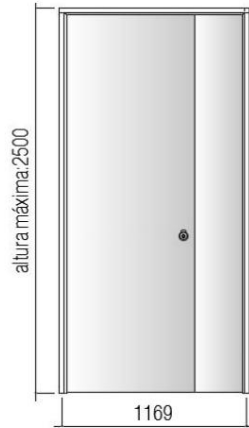
SINGLE-LEAF DOOR



SINGLE LEAF DOOR WITH BLIND PANEL (1200)



ECP1209



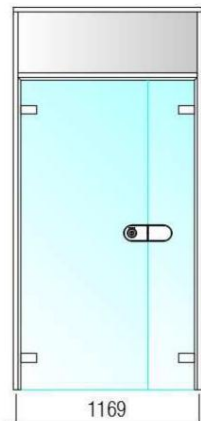
ECP1210



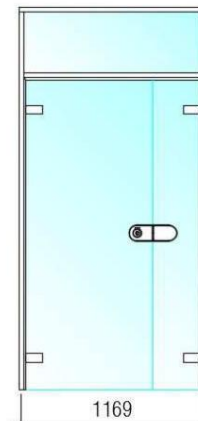
ECP1211



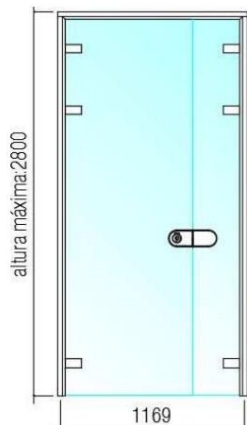
ECPD1212



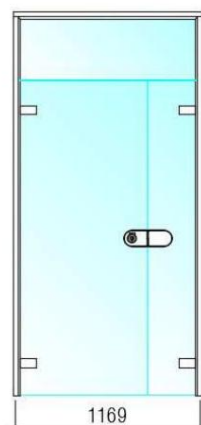
ECP1213



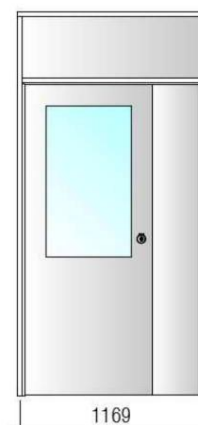
**ECPD1214
ECPS1214**



ECP1215

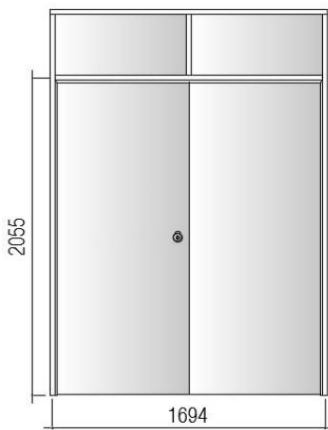


ECP1216

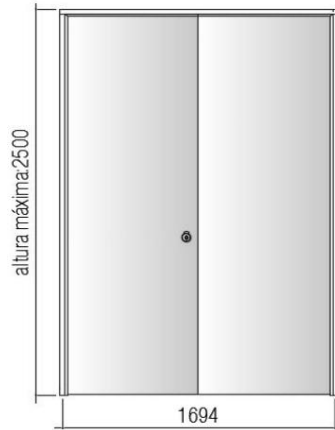


ECP1217

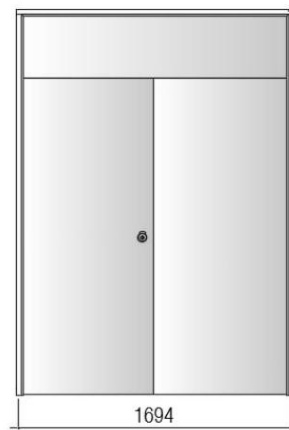
DOUBLE DOOR



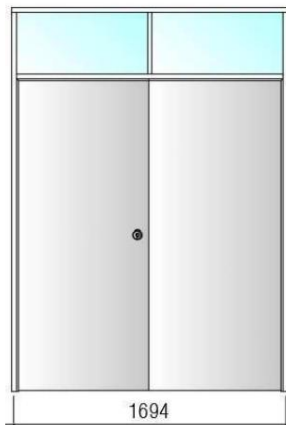
ECP1701



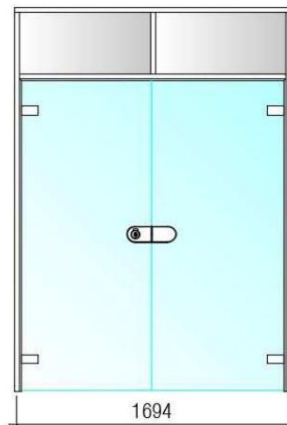
ECP1702



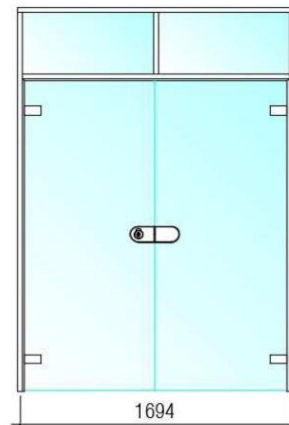
ECP1703



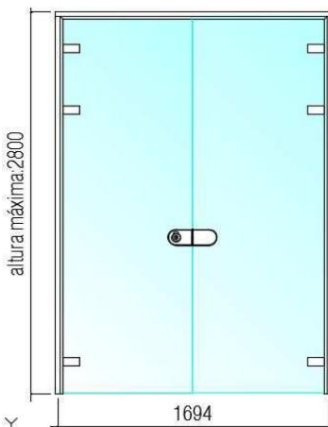
**ECPD1704
ECPS1704**



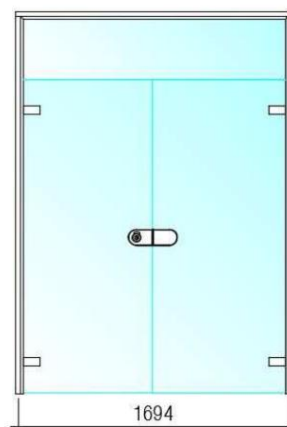
ECP1705



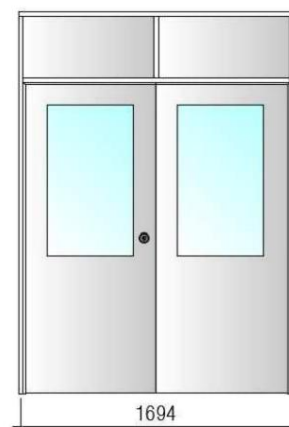
**ECPD1706
ECPS1706**



ECP1707

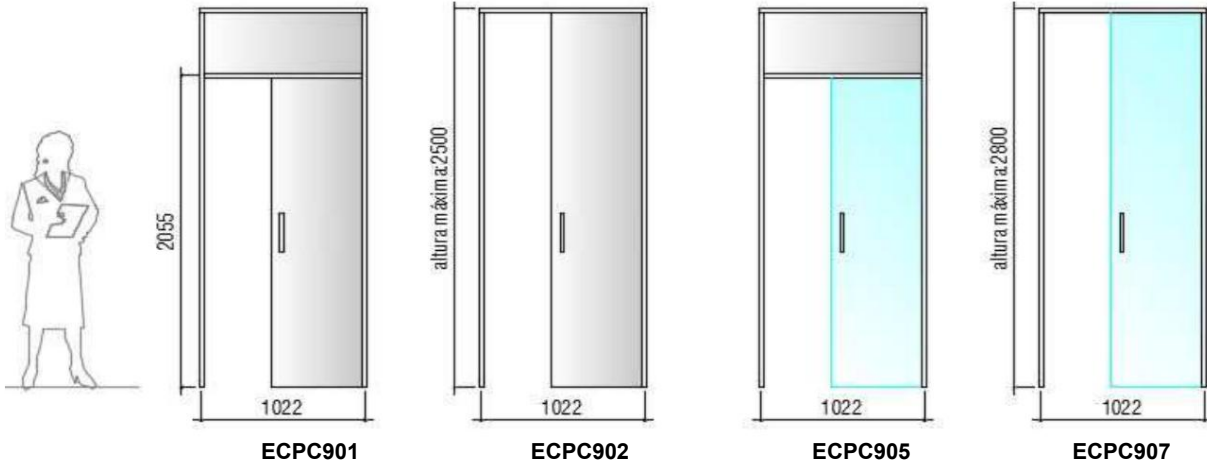


ECP1708

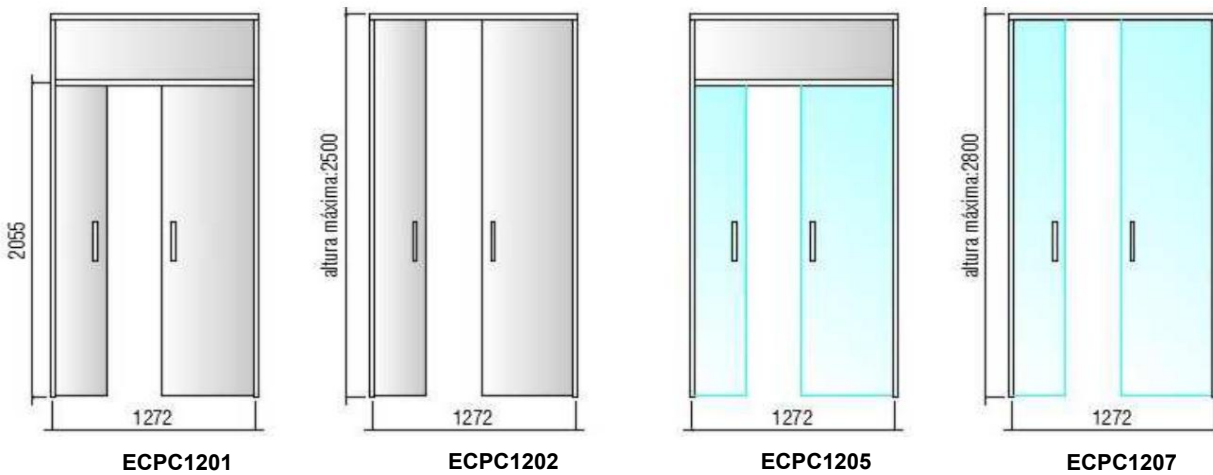


ECP1709

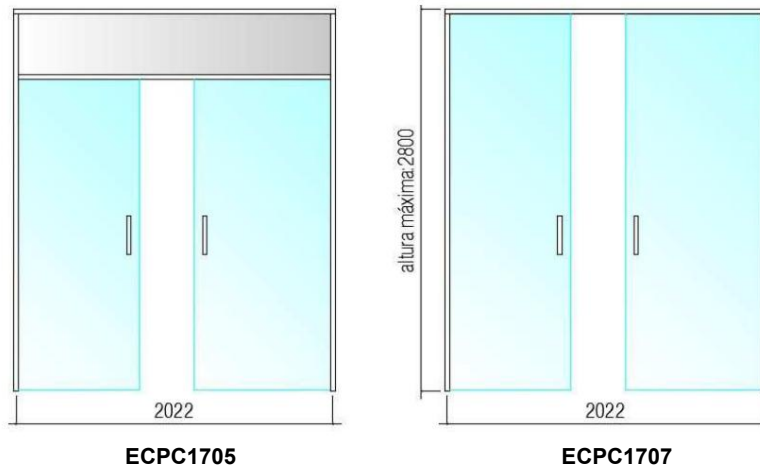
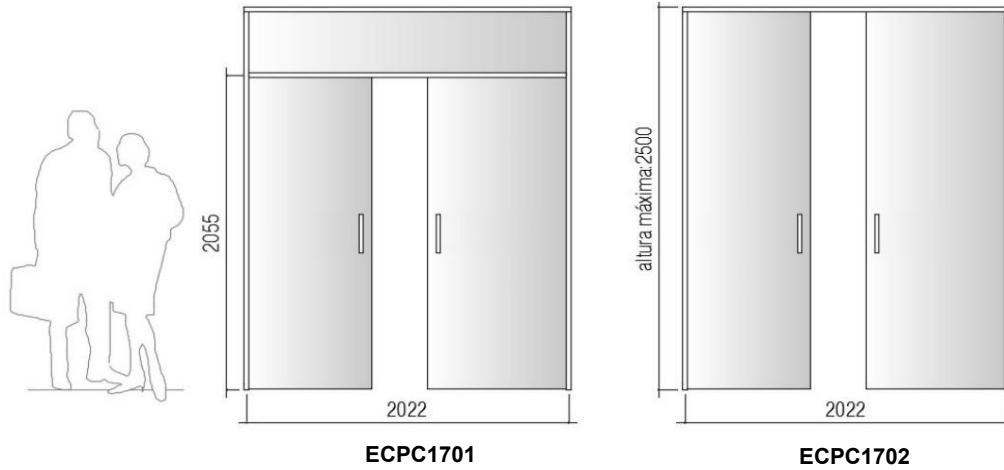
SINGLE LEAF SLIDING DOOR



TWO-LEAF SLIDING DOOR (1200)



TWO-LEAF SLIDING DOOR (1700)



Signed: OPERATIONS	Commercial Signature	Signed: TECHNICAL OFFICE
DATE	DATE	DATE